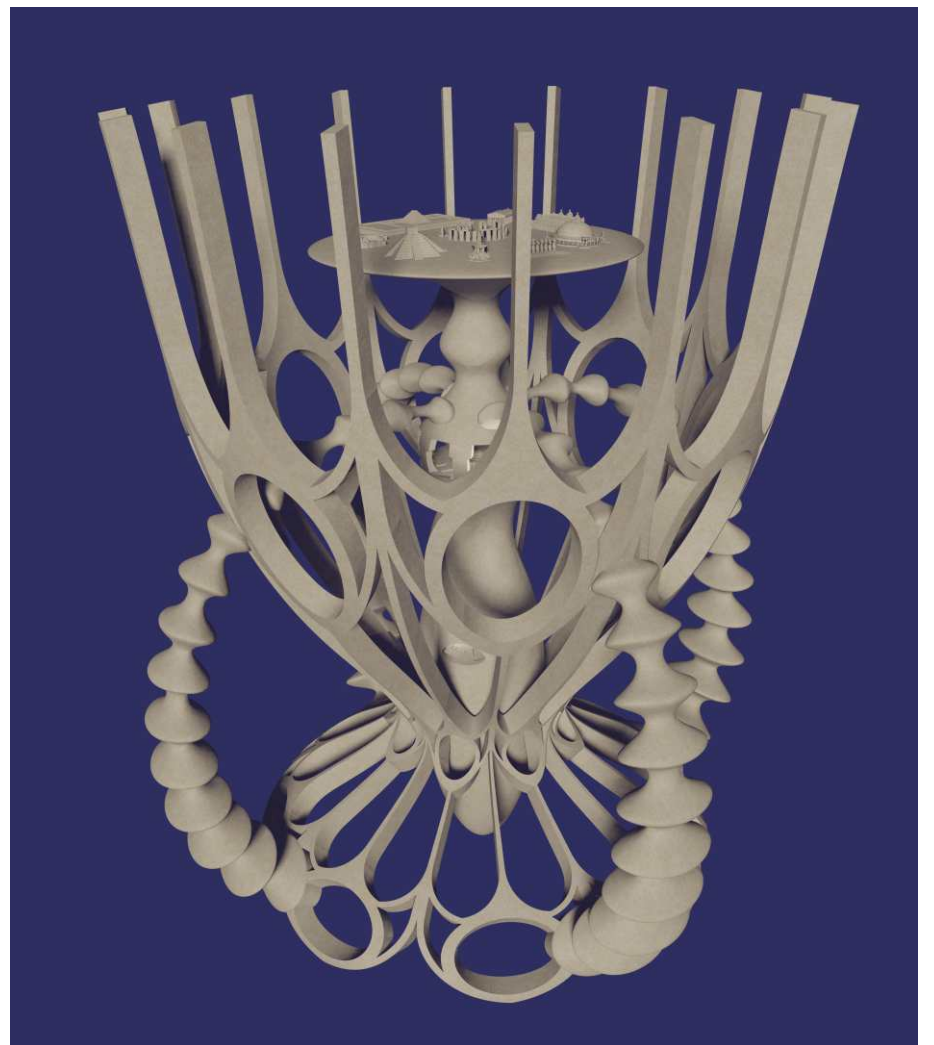
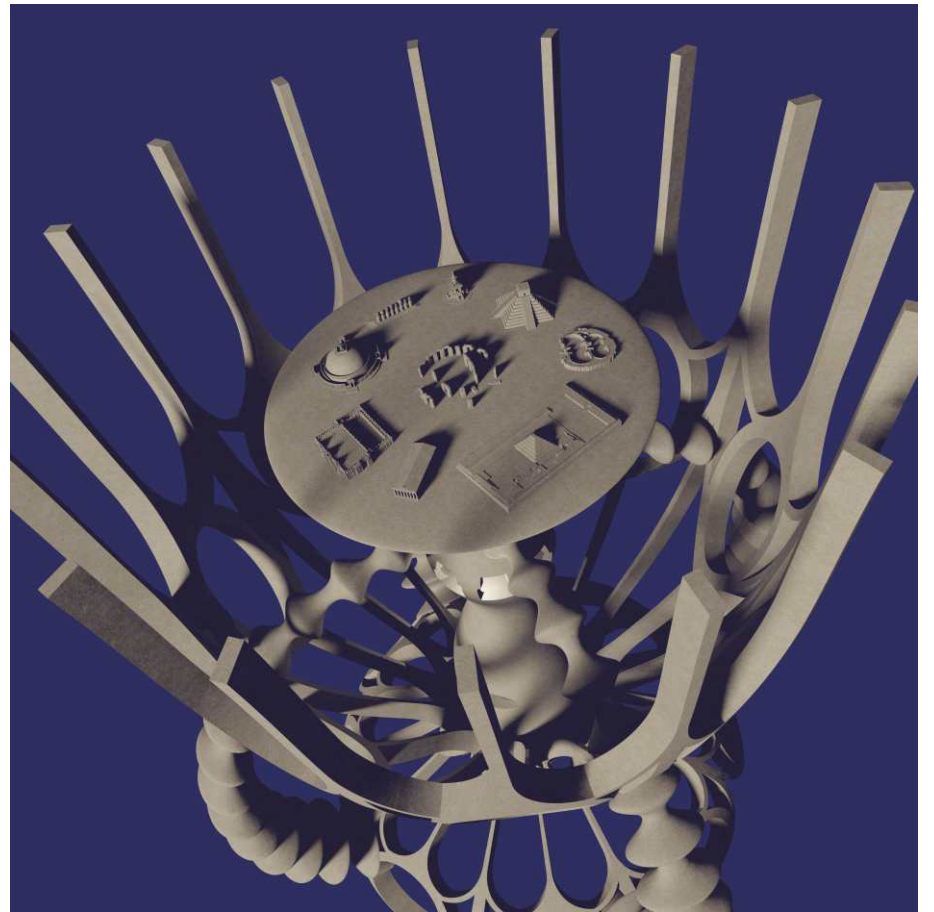
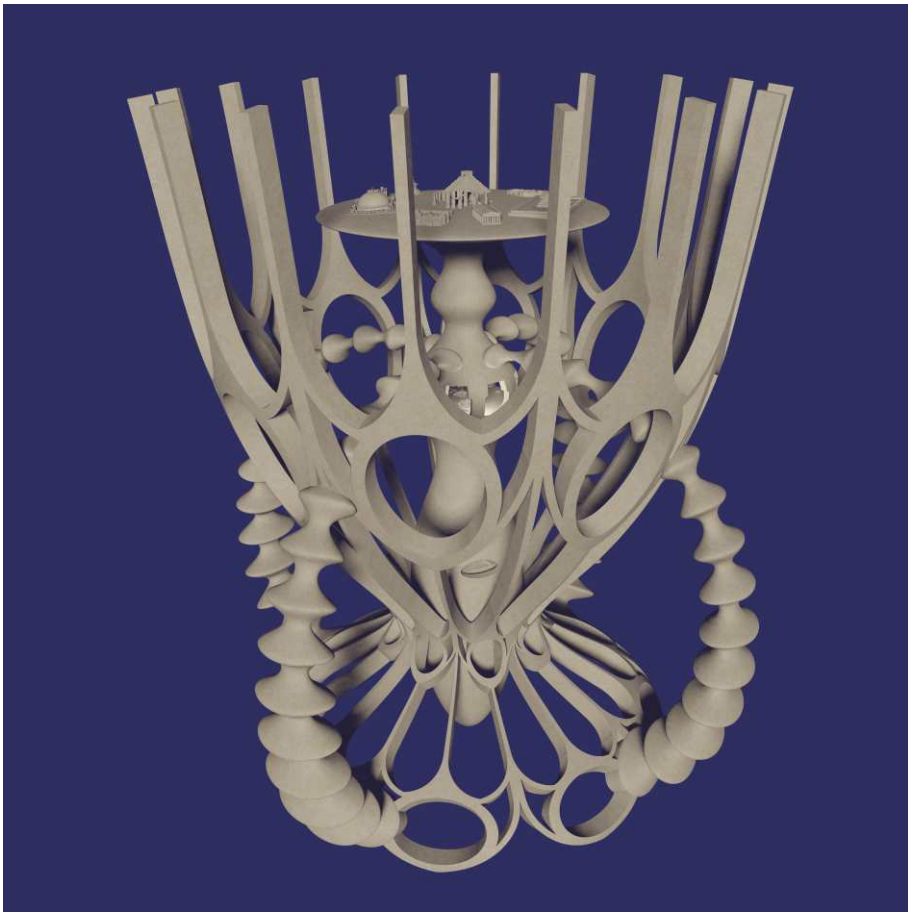


Christian LAVIGNE ★ cybersculptures



SACRÉES ARCHITECTURES !

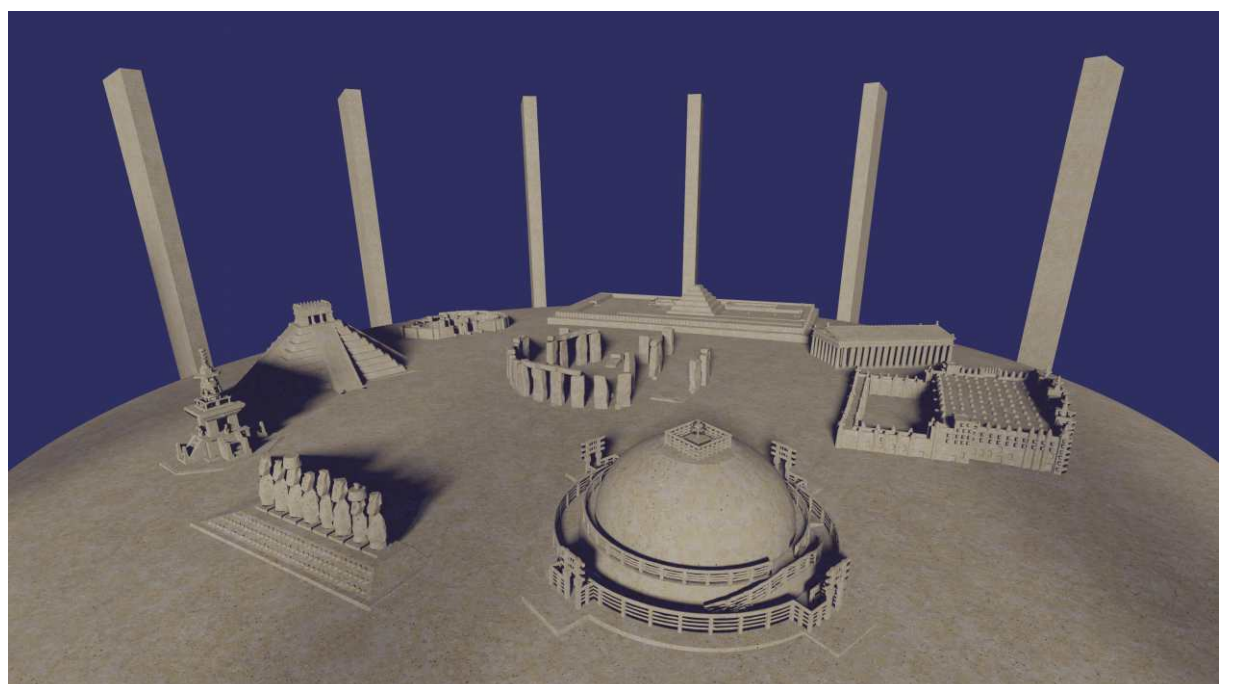
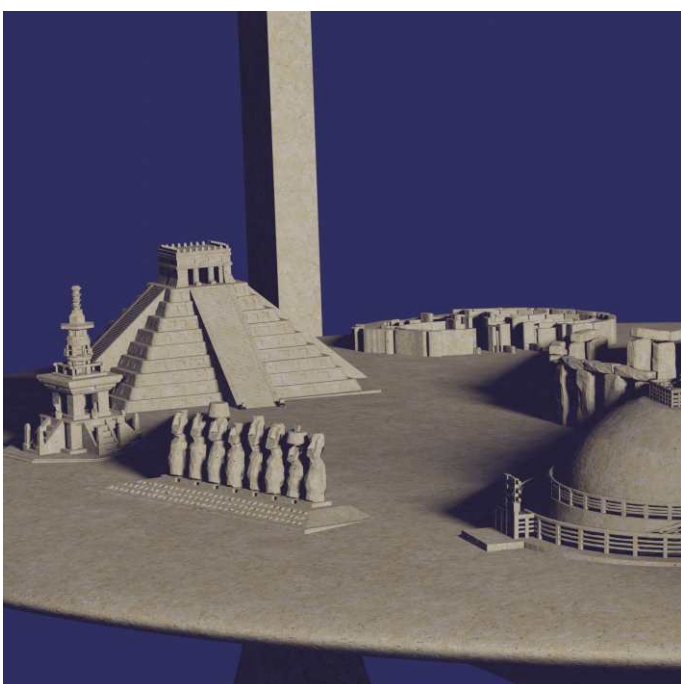
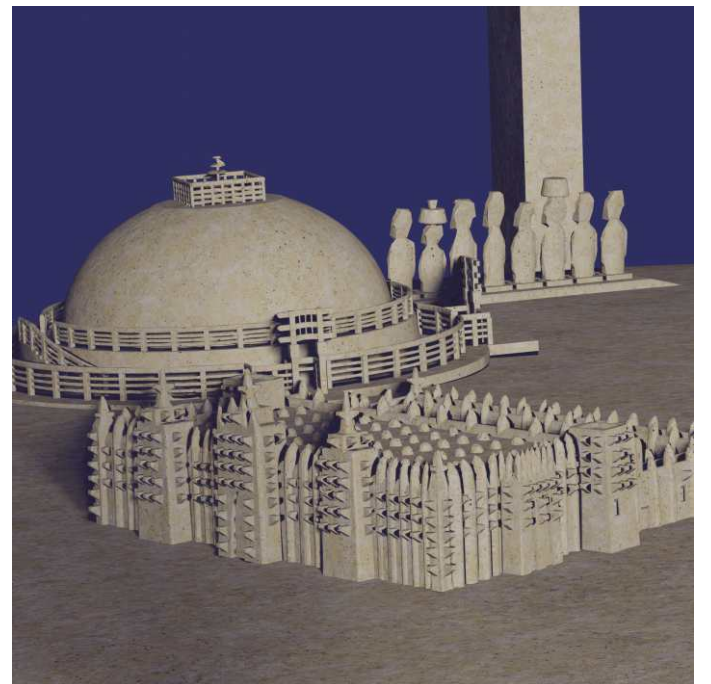
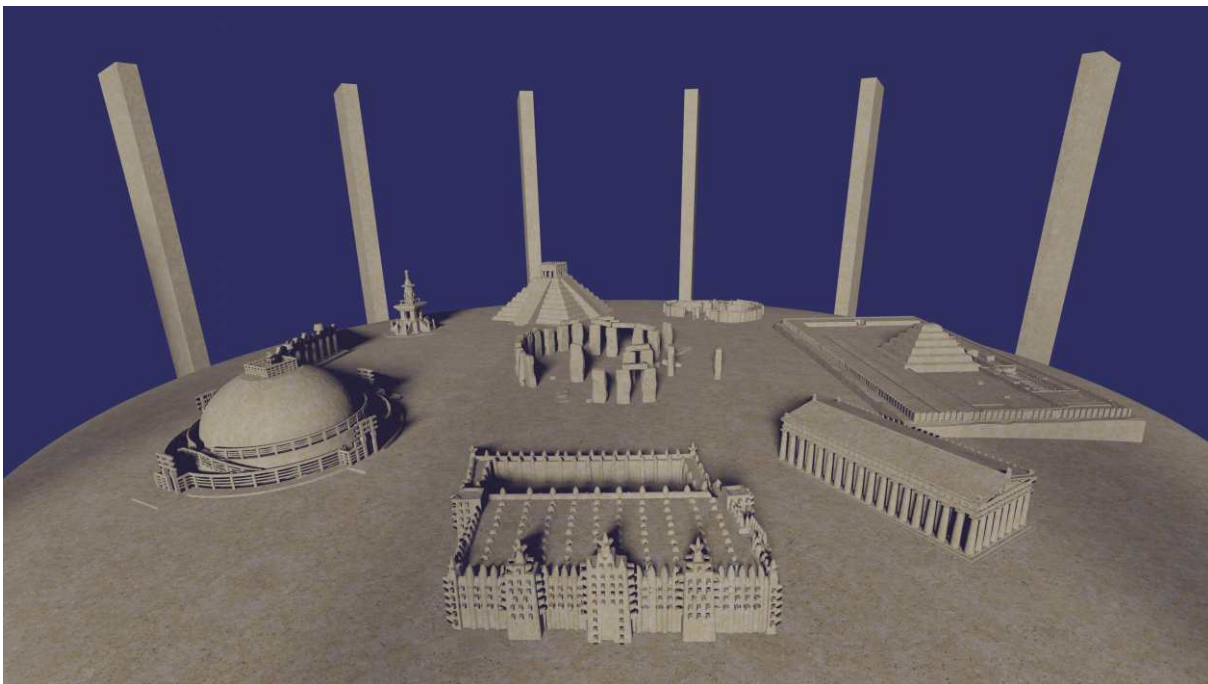
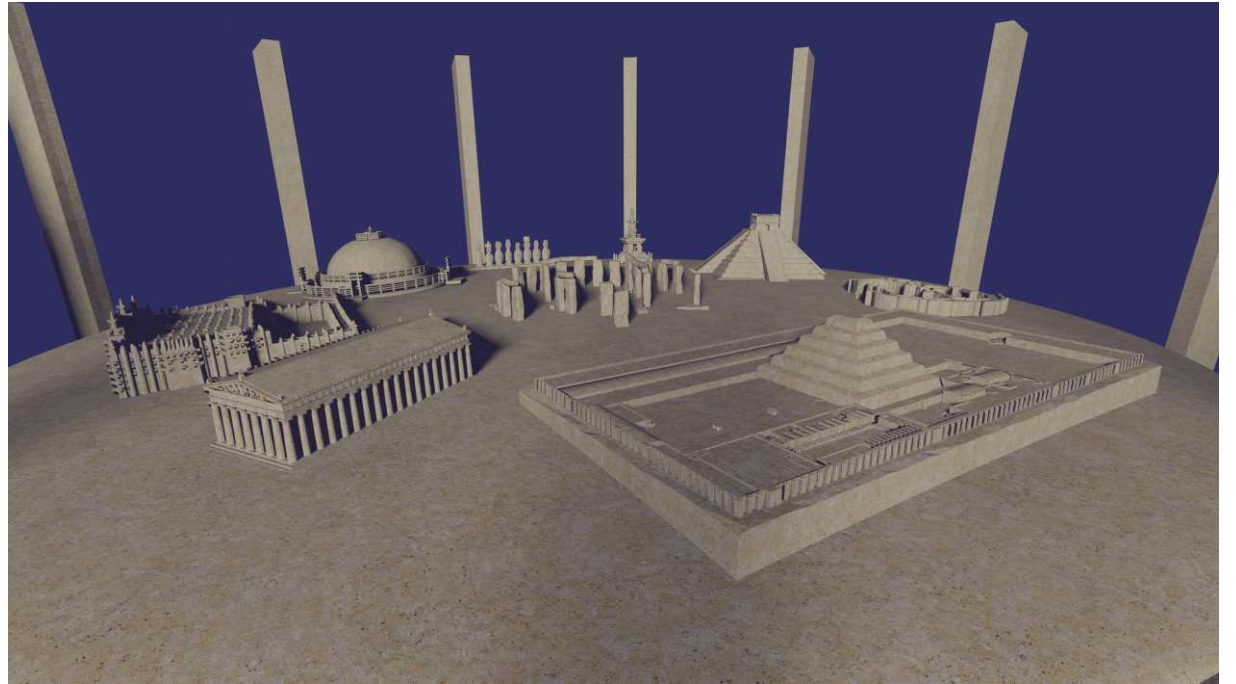
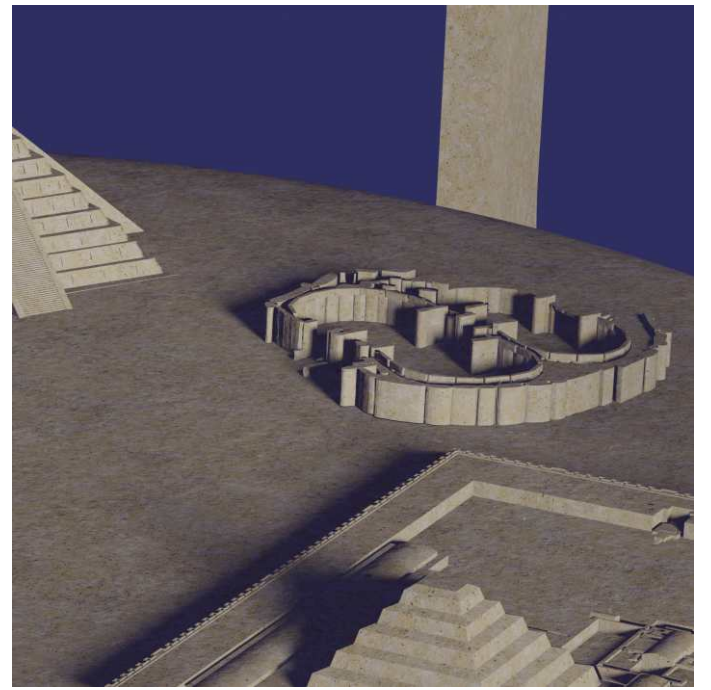
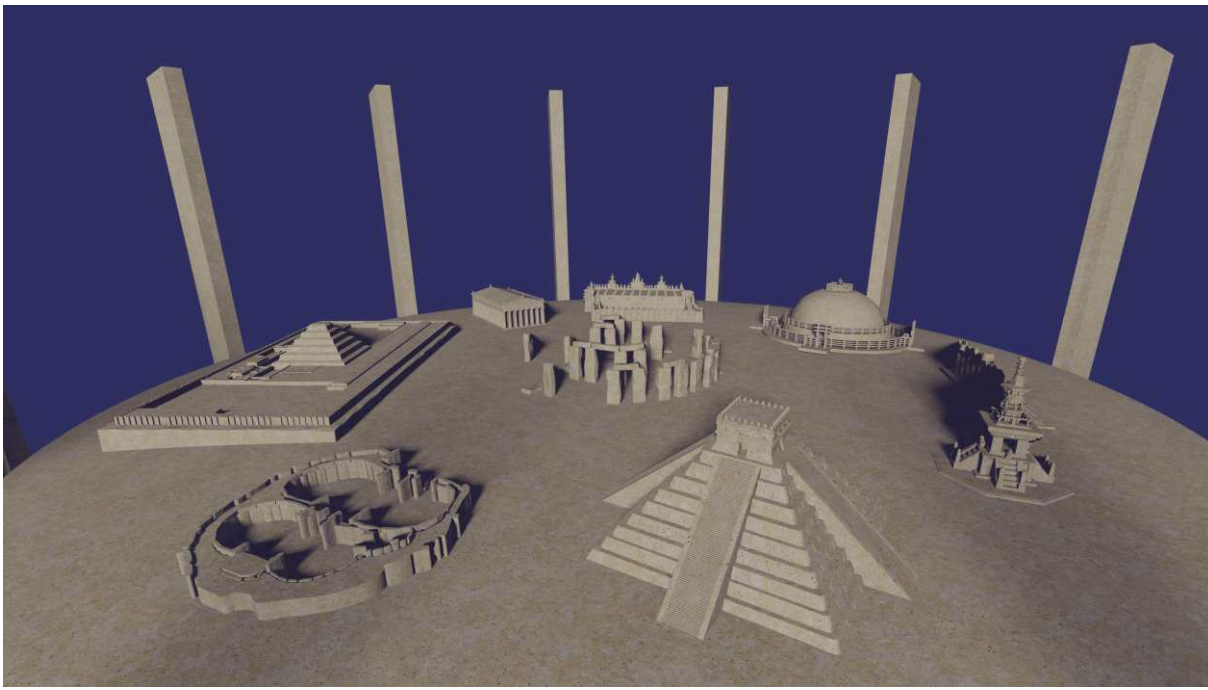
2023-2024

monumental cybersculpture project to be realized by Additive Manufacturing

This work is a form of tribute to the spiritual and mystical architectural creations of the Homo species. The exterior shape is inspired by the art of the cathedrals of the European Middle Ages. The long central figure evokes the ancient goddesses of the Mediterranean; the undulations that start from its torso symbolize water (allusion to the Mesopotamian representations of Enki/Ea). The lower hollow part depicts the Bruniquel cave (France), where Neanderthal Man built symbolic circular spaces, with stalagmites, 175,000 years ago ! Many thanks to Pr. Jacques JAUBERT, prehistorian, and to the engineer Pascal MORA for the 3D scan. The upper hollow part evokes the Turkish site of Göbekli Tepe, where the "first temple" known to date was found, built about 12,000 years ago by hunter-gatherer populations. The plateau, a sort of headdress, which ends the slender central figure, presents a set of constructions ranging from prehistory to our era, from Europe to the Pacific via Asia. We recognize in the center: Stonehenge (3rd century BCE, GB), surrounded by the Maltese temple of Mnajdra (4th-3rd century BCE), the funerary complex of the pharaoh Djoser (3rd century BCE, Egypt), the Parthenon (5th century BCE, Greece), the great mosque of Djenné (13th-20th century, Mali), the great stupa of Sanchi (3rd-1st century BCE, India), the Dabotap pagoda (8th century, Korea), a series of moai from Easter Island (13th-15th century), and the Kukulkán pyramid of Chichén Itzá (1st-2nd century). Except for the Malta temple, which I roughly reconstructed, the 3D models of these ancient monuments were found on the sites 3dwarehouse.sketchup.com (Djoser, by L.VII.C), sketchfab.com (Stonehenge, by ruslans3D; Sanchi, by willimxp), cults3d.com (Dabotap, Moai, Chichén Itzá - Kukulkán, Djenné, Parthénon, by MiniWorld3D - Artemio Garcia).

Christian Lavigne • mob : 33-(0)6 25 89 54 07
christianlavigne@free.fr • www.christianlavigne.art

SACRÉES ARCHITECTURES !



*Christian Lavigne • mob : 33-(0)6 25 89 54 07
christianlavigne@free.fr • www.christianlavigne.art*